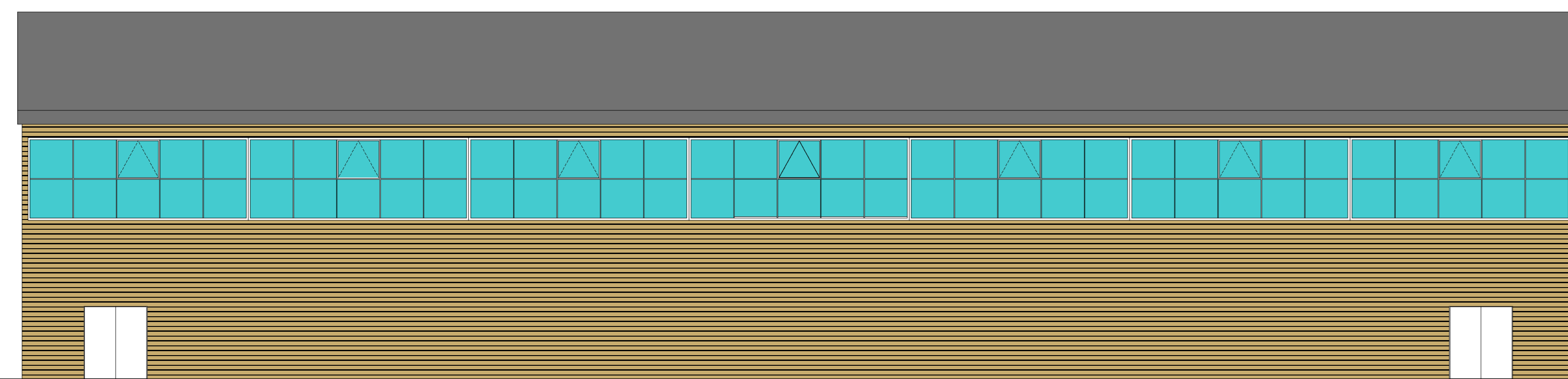
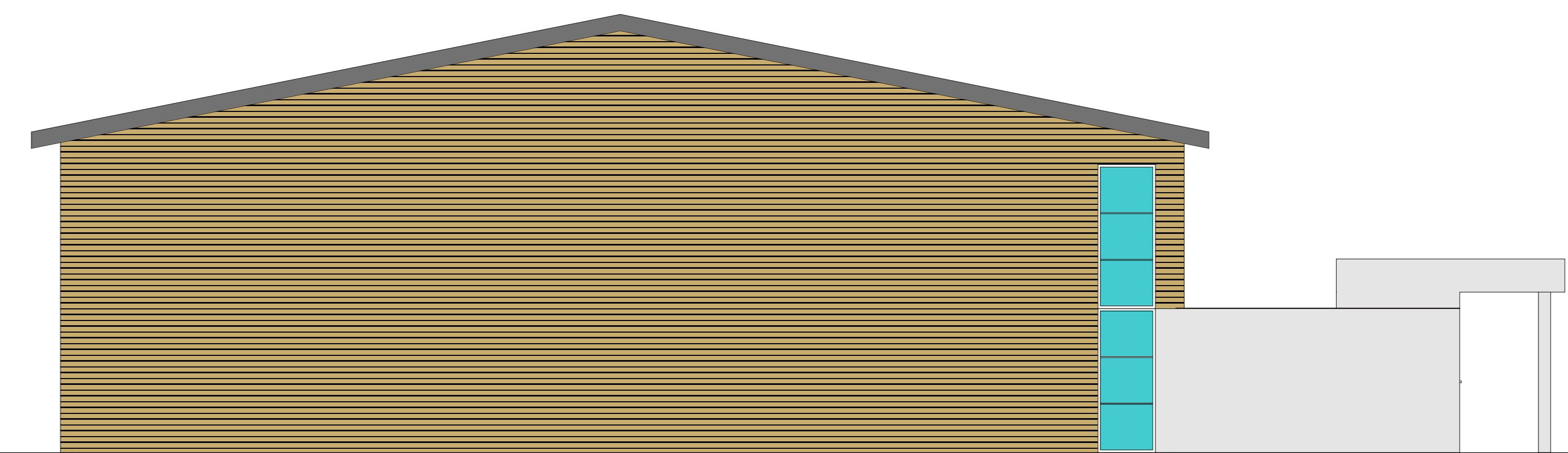


COMMUNAUTE DE COMMUNES DES 1000 ETANGS  
 CONSTRUCTION D'UN GYMNASE  
 AVANT PROJET SOMMAIRE

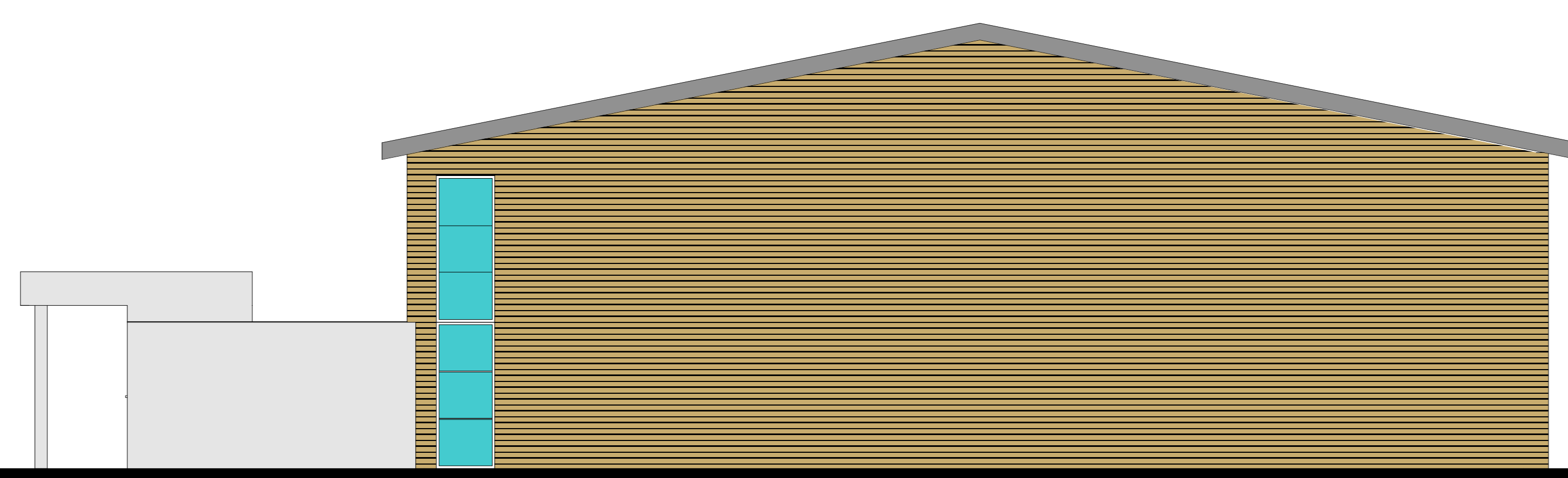
FACADES  
 COUPE  
 ECHELLE 1/100  
 5 MAI 2006  
**J.C. PETITCOLIN architecte LURE**  
 Assistant : P. HENRY architecte



FACADE NORD OUEST



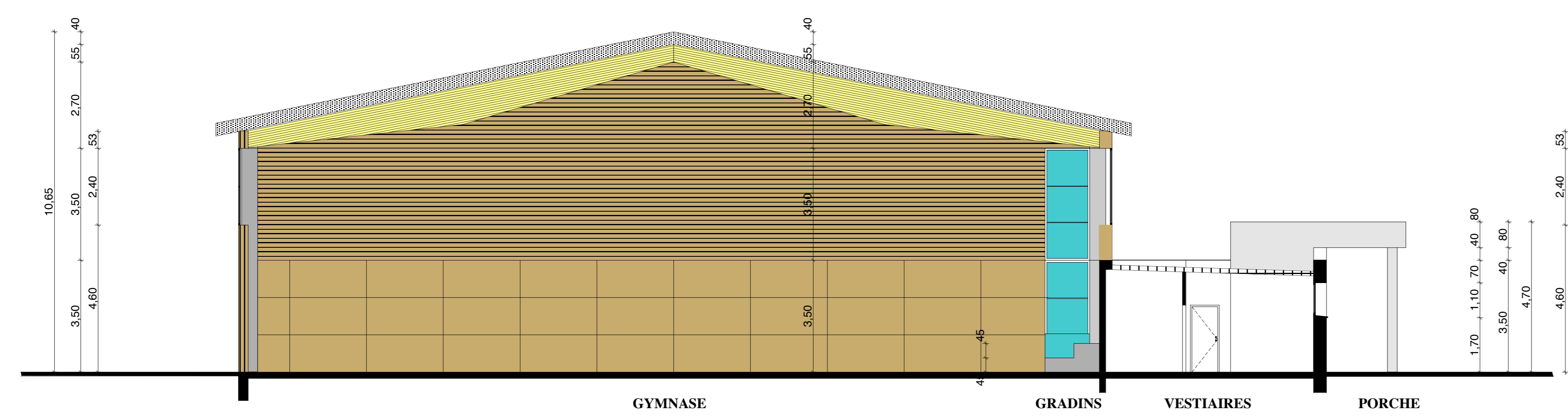
FACADE SUD OUEST



FACADE NORD EST



FACADE SUD EST



COUPE



PERSPECTIVE